

**Contact Information:**

**Patrick DeHaan**, Sr. Petroleum Analyst, Midwest/East Coast  
Email: [pdehaan@gasbuddy.com](mailto:pdehaan@gasbuddy.com) | Phone: 773-644-1427

**Gregg Laskoski**, Sr. Petroleum Analyst, Southeast  
Email: [glaskoski@gasbuddy.com](mailto:glaskoski@gasbuddy.com) | Phone: 813-436-9422

**Allison Mac**, Petroleum Analyst, West Coast  
Email: [amac@gasbuddy.com](mailto:amac@gasbuddy.com) | Phone: 626-383-8371

## Indianapolis, IN 2015 Gasoline Price Forecast

**Jan. 15, 2015** – The Indianapolis metropolitan area was the 195<sup>th</sup> most expensive market out of 444 MSAs tracked by GasBuddy in 2014. The annual average finished at \$3.35 per gallon, down 17cts from 2013 and off by 7% from the 2012 annual average of \$3.608 per gallon.

Indianapolis finished 2014 with its annual gasoline average at its lowest level since 2010. It is typical for gas prices to drop following the summer driving season, but last year was exceptional. The difference between the most expensive day and the least expensive day was \$2.03, compared to \$1.15 in 2013.

Savvy shoppers in the Indianapolis area did much better by shopping at the lowest 5% of stations, which averaged 34.8cts per gallon lower than the highest 5% of stations. This range in prices increased slightly, by .01cts over 2013 and by 4cts over 2012.

Long-range gasoline predictions are always difficult, due to unforeseen refinery events, global disruptions, geopolitical tensions, etc. which can send prices soaring. Barring any of this, GasBuddy predicts that prices in 2015 will drift higher in spring, thanks to the switch to summer spec gasoline mandated by the EPA, before averaging \$2.55 to \$2.85 between Memorial Day and Labor Day.

The good news is that the launching pad is much lower for 2015, with Indianapolis averaging \$1.935 today, down \$1.42 from last year. Our forecast for the 2015 peak daily average price in the Indianapolis metro area is \$2.75 to \$2.99 per gallon, with an annual average between \$2.40 and \$2.65.

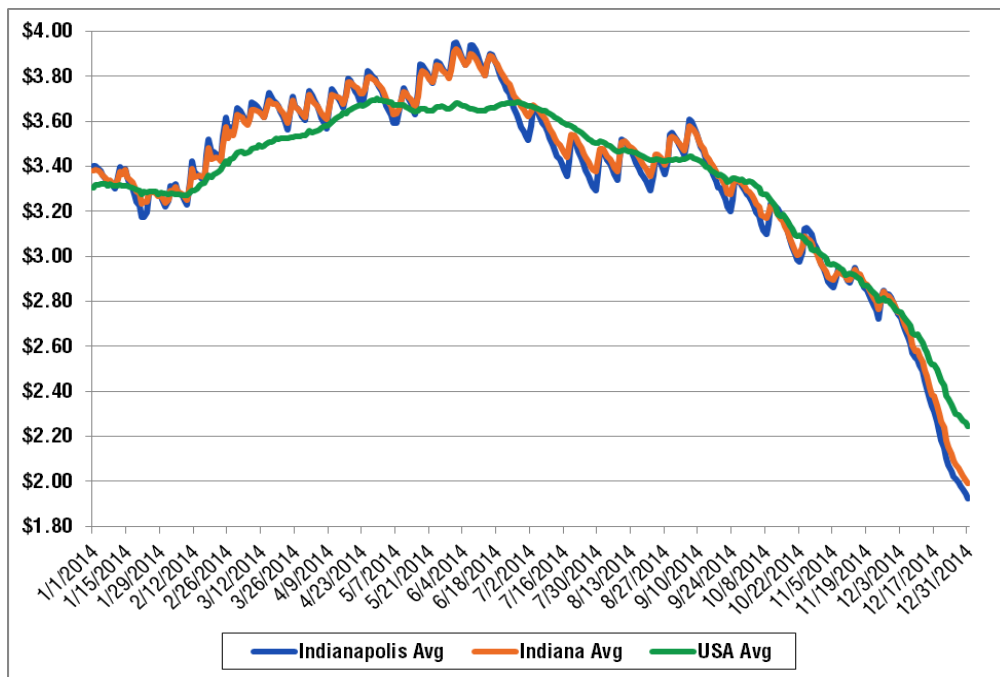
### Indianapolis, IN Market Facts

INDIANAPOLIS, IN			
Quick View	2014	2013	2012
Annual Average	3.350	3.524	3.608
Annual Median	3.355	3.529	3.614
Highest 5% of Stations	3.510	3.679	3.744
Lowest 5% of Stations	3.162	3.331	3.436
GasBuddy Gap	0.35	0.35	0.31
Most Expensive Rank	195th	155th	181st
Least Expensive Rank	250th	290th	264th

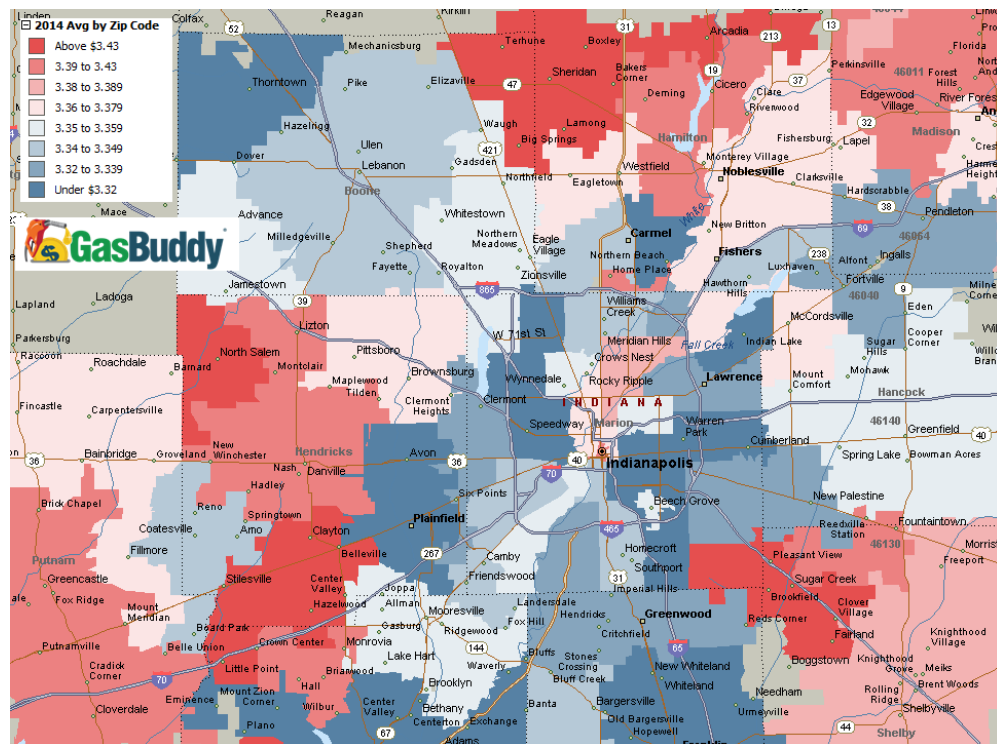
#### About GasBuddy.com

GasBuddy is the premier source for real-time local gas prices. Founded in 2000, GasBuddy.com developed as an initiative to provide consumers access to local, current gas prices. Through the GasBuddy.com website and the free GasBuddy mobile app, users can find and share gas prices with fellow drivers, saving big money at the pump.

### Daily Retail Average: Indianapolis vs. Indiana vs. USA



### 2014 Annual Average by Zip Code in Indianapolis Metro Area



#### About GasBuddy.com

GasBuddy is the premier source for real-time local gas prices. Founded in 2000, GasBuddy.com developed as an initiative to provide consumers access to local, current gas prices. Through the GasBuddy.com website and the free GasBuddy mobile app, users can find and share gas prices with fellow drivers, saving big money at the pump.